

Thermo-chiller Monitoring Software

Can conduct all setting operations as well as monitor the operating status



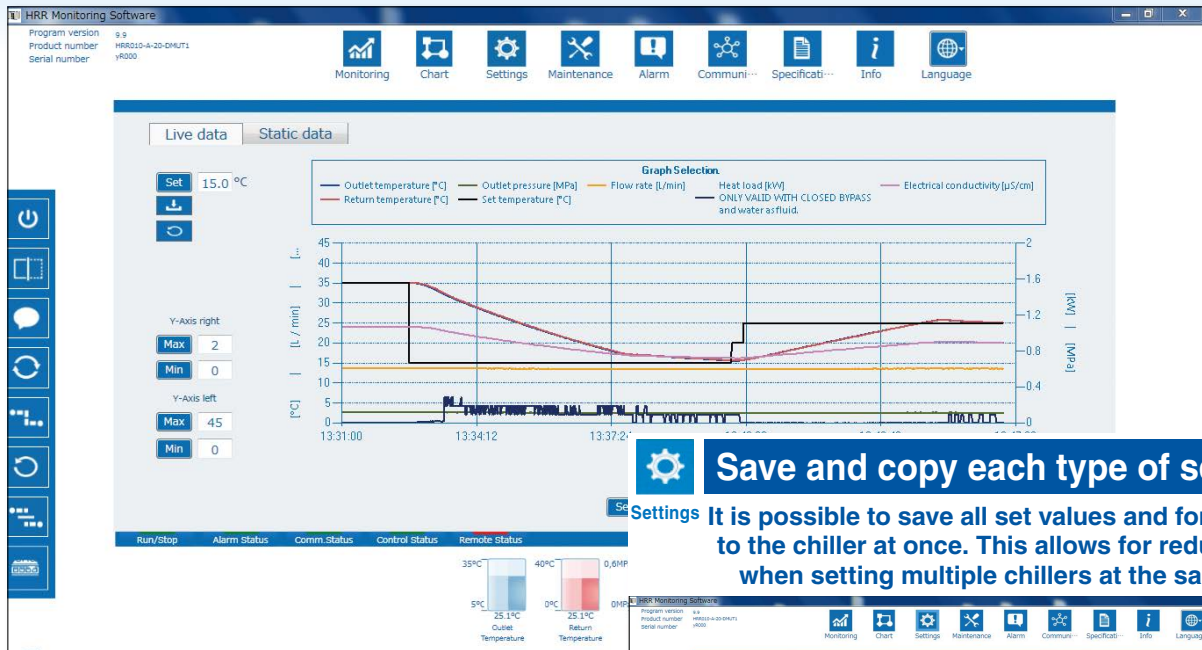
- **USB 2.0 type B**
- **Compatible OS: Windows 7/10 (.NET Framework 3.5 or higher)**
* A dedicated driver is required to use with Windows 7.
- **Supported languages:**
English, German, Japanese, French, Italian, Russian, Spanish, Turkish, Chinese, Korean



Monitoring

Trend graph display

This graph displays changes in temperature, flow rate, etc., measured values in chronological order. This allows for the monitoring of the operating status.

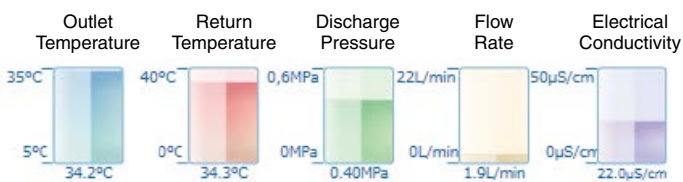


Save and copy each type of set value


Settings

It is possible to save all set values and forward them to the chiller at once. This allows for reduced labor when setting multiple chillers at the same time.

Process value list displayed by chart and numerical value



Compatible thermo-chiller: Rack Mount Type HRR Series

Series	Set temperature range	Cooling capacity	Temperature stability	Cooling method	Circulating fluid
	5 to 35°C 15 to 35°C	1.1 kW, 1.2 kW, 1.8 kW, 2.4 kW, 3.0 kW, 5.1 kW	±0.1°C	Air-cooled refrigeration Water-cooled refrigeration	Tap water 15% ethylene glycol aqueous solution



P-E20-18

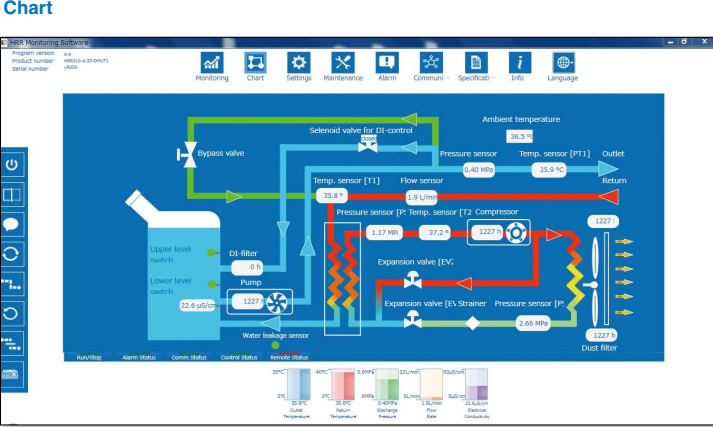
Thermo-chiller Monitoring Software



The monitoring software can be downloaded here.



Graphical process data



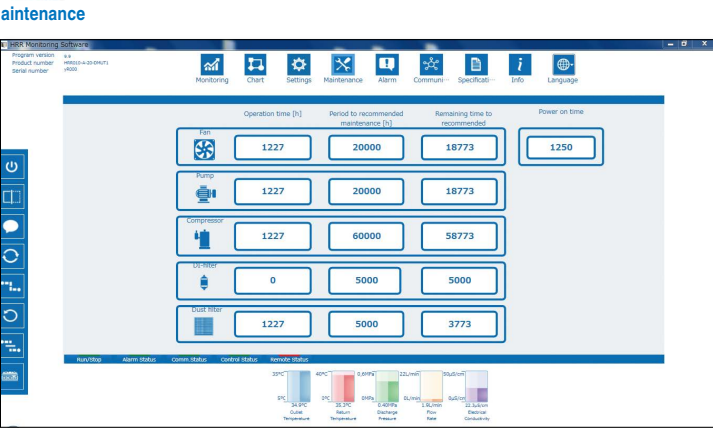
Logging function

Info It is possible to record the operating data history to your PC.

Information that can be recorded to a CSV file

Start time
Time elapsed [s]
Chiller model
Chiller serial no.
Firmware version
Chiller set temperature [°C]
Chiller discharge temperature [°C]
Chiller return temperature [°C]
Chiller discharge pressure [MPa]
Chiller flow rate [L/min]
Estimated heat load [kW] (When the bypass is fully closed (for tap water))
Electric conductivity [µS/cm] (For Option DM)

Preventive maintenance



Alarms and descriptions

Alarm

Display of current alarms, last 20 alarms, and last 150 alarms

Chiller status when the alarm was generated

Alarm message

Alarm status when the selected alarm was generated

Detection of device spec.



Display of communication

Communication Confirmation of communication commands