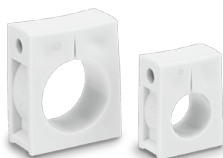


# Holder for Speed Controller

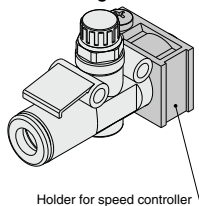
# TMH Series

A holder for securing a speed controller with One-touch fittings (In-line type)

Possible to hold a single controller.



## ● Holder mounting



## Specifications

Ambient temperature	-20 to 60°C
Material	Polypropylene
Color	White

## Accessory: Cross Recessed Round Head Screw for Mounting (Zinc chromated)

Model		Size (Nominal x Length)	Piece
Metric size	Inch size	M3 x 15	1
<b>TMH-23J</b>	<b>TMH-01J</b>		
<b>TMH-04J</b>	<b>TMH-03J</b>		
<b>TMH-06J</b>	<b>TMH-07J</b>		
<b>TMH-06</b>	<b>TMH-07</b>		
<b>TMH-08</b>	<b>TMH-09</b>		
<b>TMH-10</b>	—	M4 x 35	
<b>TMH-12</b>	<b>TMH-13</b>		

## Series

Select the applicable holder/TMH for each speed controller from the table below.

### Metric Size

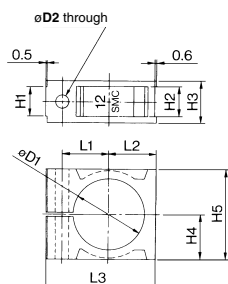
Applicable series	Tubing size	Applicable tubing					
		23 ø3.2	04 ø4	06 ø6	08 ø8	10 ø10	12 ø12
AS1002F	<b>TMH-23J</b>	<b>TMH-04J</b>	<b>TMH-06J</b>				
AS2002F							
AS2052F			<b>TMH-06</b>				
AS3002F			<b>TMH-07</b>	<b>TMH-08</b>			
AS4002F					<b>TMH-10</b>	<b>TMH-12</b> <b>TMH-13</b>	

Note) The applicable TMH for AS1002F-02 is not available.

### Inch Size

Applicable series	Tubing size	Applicable tubing					
		01 ø1/8"	03 ø5/32"	07 ø1/4"	09 ø5/16"	11 ø3/8"	13 ø1/2"
AS1002F	<b>TMH-01J</b>	<b>TMH-03J</b>	<b>TMH-07J</b>				
AS2002F							
AS2052F			<b>TMH-07</b>	<b>TMH-09</b>			
AS3002F					<b>TMH-10</b>		
AS4002F						<b>TMH-13</b>	

## Dimensions



Model		øD1	øD2	H1	H2	H3	H4	H5	L1	L2	L3	Symbol
Metric size	Inch size											
<b>TMH-23J</b>	<b>TMH-01J</b>	8.5	3.3	4.5	4.6	7.5	6	12	7.2	6.6	18	1/8J
<b>TMH-04J</b>	<b>TMH-03J</b>	9.4										4 5/32J
<b>TMH-06J</b>	—	11.7	3.3	6.3	6.4	9.3	7.7	15.4	8.5	8.3	21	6J
—	<b>TMH-07J</b>	12.1										1/4J
<b>TMH-06</b>	—	13.1										6
—	<b>TMH-07</b>	13.5	4.3	7.1	7.2	11.1	10	20	11	10.6	26.5	1/4
<b>TMH-08</b>	<b>TMH-09</b>	15.5										8 5/16
<b>TMH-10</b>	—	18.8										10
<b>TMH-12</b>	—	21.2	4.3	9.5	9.6	13.5	14	28	14.2	14.6	34	12
—	<b>TMH-13</b>	22										1/2