

# Pressure Gauge with Switch



# GP46 Series



- A pressure switch function has been added to the gauge.
- The pressure switch is equipped with a light for verifying operation.
- The pressure gauge is equipped with a limit indicator.
- To be used for verifying the supply pressure.

## Standard Specifications

Model		GP46
Gauge	Type	Back side thread
	Ambient and fluid temperature	-5 to 60°C (No freezing)
	Indicated pressure range	0 to 1.0 MPa
	Port size <sup>(1)</sup>	R 1/8, R 1/4 (Option M: with M5 female thread)
Pressure switch	Fluid <sup>(2) (6)</sup>	Air
	Indication precision <sup>(7)</sup>	±0.03 MPa
	Setting range <sup>(3) (4)</sup>	0.1 to 0.8 MPa
	Hysteresis	0.07 MPa
	Pointer error <sup>(5)</sup>	±0.05 MPa (5 to 40°C) ±0.08 MPa (-5 to 60°C) No freezing
	Contact	With light: 1a (Normally open) Without light: 1ab (Normally open/ Normally closed)
	Wiring	Lead wire (Length: 300 mm)
	Indicator light	AC DC Light emitting diode (LED)
Clear cover		Part no.: G46-00-00-3
Attachment:		C Part no.: 1305104-4A
With cover ring assembly		C2 Part no.: 1305104-10A
Weight (kg)		0.12

Note 1) When mounting a pressure gauge, use caution not to tighten excessively. Excessive tightening will cause product to be damaged. Use a pipe tape for sealing.

Note 2) Water is not an acceptable fluid. When using the other fluids, please consult with SMC for compatibility information concerning corrosion.

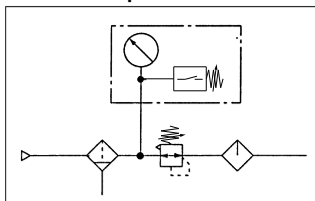
Note 3) Set value of pressure switch is indicated by pointer (green). It is the point where the circuit between N.O. (white) and COM (black) is turned off during pressure decrease. To set the value, turn needle in clockwise position to the correct value. When setting; if desired set position has been passed, turn needle in a counterclockwise direction back again beyond the desired value and then once again return needle in a clockwise direction stopping at the desired value. Value must be set while needle is traveling in a clockwise direction.

Note 4) Make sure to provide a minimum difference of 0.1 MPa between the set pressure and the operating pressure (including the pressure drop). If the difference is smaller, it could lead to improper operation. Refer to page 1298 for details on how to set the setting needle. Use caution: Operating pressure should be the sum of the pressure of the setting needle error (±0.03 MPa), the hysteresis (0.07 MPa), and the display accuracy (±0.05 MPa) on the set pressure value, or the circuit between N.O. (white) and COM (black) may not turn ON while pressure is increasing.

Note 5) Maximum error value: Add the pressure gauge indicator error of 0.03 MPa to the setting needle error.

Note 6) Avoid freezing as this may cause a malfunction.  
Note 7) The guaranteed temperature range is 23°C ±5°C.

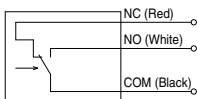
## Circuit Example



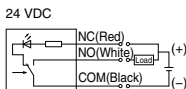
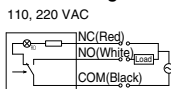
- Be sure to read the precautions for selection and mounting.

## Circuit Diagram

### Without indicator light



### With indicator light



The arrow in the diagram indicates the direction of the pressure increase. The light turns OFF when the pressure becomes higher than the set pressure and turns ON when the pressure becomes lower than the set pressure.

## Model (Standard)

Model	Pressure range <sup>(1)</sup>		Indication unit	Connection thread	Note
	MPa				
GP46-10-01 to 02 (-Q)	0 to 1.0		MPa	R 1/8 R 1/4	—
GP46-10-01 to 02L2	0 to 1.0				
GP46-10-01 to 02L5 (-Q)	0 to 1.0				

Note 1) Do not apply pressure more than the maximum display pressure. This will cause a malfunction.

Other versions of this unit can be made on a Made-to-Order basis. Please consult with SMC for details, as delivery times may be extended.

## Model (Made to Order)

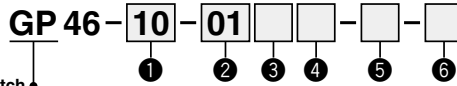
Model	Pressure range <sup>(1)</sup>		Indication unit	Connection thread	Note
	MPa	psi			
GP46-10-01 to 02-X201	0 to 1.0	—	MPa	R 1/8 R 1/4	Lead wire length 3 m
GP46-10-01 to 02L2-X201					
GP46-10-01 to 02L5-X201					
GP46-P10-01 to 02-X30 <sup>(2)</sup>	0 to 1.0	0 to 140	MPa, psi	—	—
GP46-P10-01 to 02L5-X30 <sup>(2)</sup>					

Note 1) Do not apply pressure more than the maximum display pressure. This will cause a malfunction.  
Note 2) Under the New Measurement Law, products for overseas use only (SI unit type for use in Japan)

## Micro-switch Rated Voltage

Load	Load resistant		
Rated voltage	30 VDC	125 VAC	250 VAC
Operating current range	0.01 to 0.5 A	0.01 to 0.3 A	0.01 to 0.2 A

**How to Order**



Pressure gauge with switch

	Symbol	Description	GP46
	+		
① Max. display pressure	<b>10</b>	1.0 MPa	●
	<b>P10</b> <sup>(1)</sup>	1.0 MPa, 150 psi	○ <sup>(2)</sup>
	+		
② Connection thread	<b>01</b>	R 1/8	●
	<b>02</b>	R 1/4	●
	+		
③ Option	<b>Nil</b>	—	●
	<b>M</b> <sup>(3)</sup>	With M5 (Female thread)	●
	+		
④ Suffix for indicator light <sup>Note 4)</sup>	<b>Nil</b>	Without indicator light	●
	<b>L2</b>	Neon light (100 VAC/220 VAC)	●
	<b>L5</b>	LED/24 VDC	●
	+		
⑤ Attachment <sup>Note 5)</sup>	<b>Nil</b>	Without cover ring assembly	●
	<b>C</b>	Clear cover has no protrusion. (Clear cover is irremovable.)	●
	<b>C2</b>	Clear cover has protrusion. (Clear cover is removable.) The wrench flats protrude.	●
	+		
⑥ Special specification	<b>Nil</b>	—	●
	<b>X30</b>	Both MPa and psi	○ <sup>(2)</sup>
	<b>X201</b>	Lead wire length 3 m	●
	<b>Q</b> <sup>(6)</sup>	Compliant with CE/UKCA marking	●

Note 1) This symbol must be used with Special specification "X30."

Note 2) Under the New Measurement Law, products for overseas use only (SI unit type for use in Japan)

Note 3) To use the pressure gauge with M5 (female thread), attach the joint when piping the tube. For combinations with the special specification products, please consult SMC separately.

Note 4) Please consult with SMC for X30. 220 VAC is not available for -Q.

Note 5) For pressure gauges with the cover ring assembly, it is recommended to select the option M so as to perform the piping.

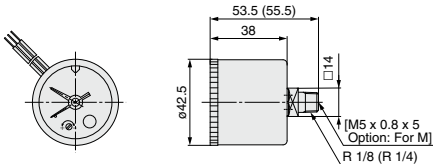
Note 6) The rated micro switch for CE/UKCA marked products is under the following conditions.

Load	Load resistant	
<b>Rated voltage</b>	30 VDC	125 VAC
<b>Operating current range</b>	0.01 to 0.5 A	0.01 to 0.3 A

**Dimensions**

(-Q: With ground terminal on back side) \* The dimensions in ( ): Connection thread R 1/4

**GP46-10-01 to 02 (M) (L2,5)**

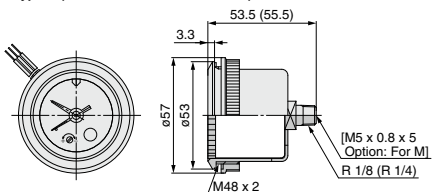


\* The dimensions in ( ): Connection thread R 1/4

**With cover ring assembly (For panel mount)**

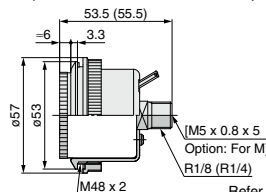
**GP46-10-01 to 02 (M) (L2,5)-C**

Type C (Clear cover is not removable.)

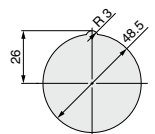


**GP46-10-01 to 02 (M) (L2,5)-C2**

Type C2 (Clear cover is removable. The wrench flats protrude.)



Panel fitting dimensions  
Plate thickness Max. 3.5 t



Refer to page 1298 for mounting method.