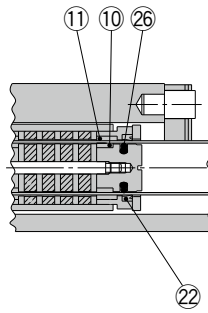
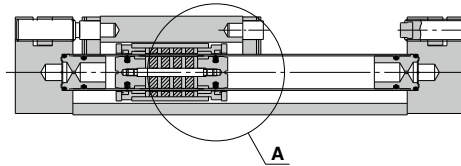


MX^Y Series

ø6, ø8, ø12



Construction



Detail drawing of part A

* The numbers correspond with those in the "Construction" of the MX^Y series in the **Web Catalog**.

Seal Kit List

| No. | Description | Material | Note |
|-----|-------------------------|----------|------|
| ⑩ | Wear ring A | Resin | |
| ⑪ | Wear ring B | Resin | |
| ⑫ | Cylinder scraper | NBR | |
| ⑬ | Piston seal | NBR | |

Replacement Parts: Seal Kit

| Bore size (mm) | Part no. | Contents |
|----------------|-----------------------|---------------------------------------|
| 6 | MX ^Y 6-PS | A set of two of ⑩, ⑪, ⑫ and ⑬ each |
| 8 | MX ^Y 8-PS | |
| 12 | MX ^Y 12-PS | |

* As for MX^Y12, only one piston seal ⑬ is included.

Replacement Parts: Grease Pack

| Grease pack part no. |
|----------------------|
| GR-S-010 (10 g) |
| GR-S-020 (20 g) |